

# SMMS 6.0 - NEW FEATURES

If you're already familiar with the SMMS system, here's a quick overview of features of the new main screen.

## Dual User Interface

SMMS Version 6 is operable in the graphical Windows® system as well as traditional "green screen" character-based terminals. And regardless of the user interface selected, SMMS still features the power, security and reliability of the IBM iSeries/400 server family.

The new Windows format allows you to work with all system data in the popular Microsoft Outlook® style. Figure 1 illustrates new SMMS Main screen with the equipment list displayed.

System modules (Work Orders, Equipment, Inventory, Labor and Purchasing) are expressed on an "outlook bar" menu. You merely point and click on the menu and file option, the system will display the database in a list format using your customized pre-defined sort and filtering options.

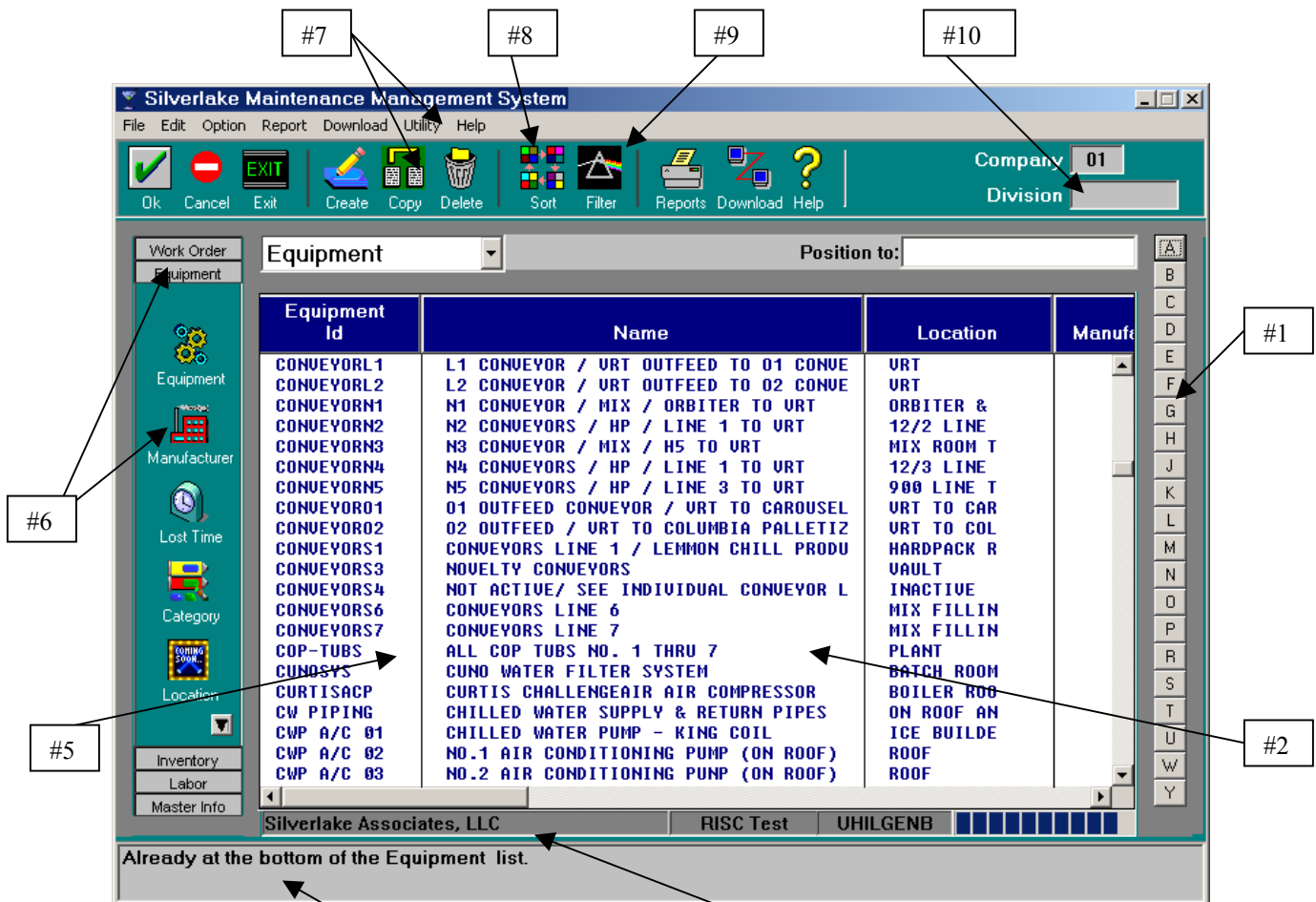


FIGURE 1

Figure 1 shows the new system screen with the Equipment list displayed. Here are a few highlights of this new screen (clockwise from right edge):

1. "Quick Positioning" buttons simplify list navigation.
2. The list area of the screen includes up to fifteen columns of information for each database selected. Vertical and horizontal scroll bars allow you to view additional columns and rows.
3. Session Information area shows the current environment and user id.
4. Error and information messages are displayed in a scrollable message area at the bottom of the screen.
5. "Right click" on a selected row for pop-up menu processing options.
6. The "Outlook Bar" buttons in the left margin of the screen allow you to the major system modules. Within each module, functions are selected from listed icons.
7. The system menu provides the complete functions of the SMMS system, and the most important functions are available in the "tool bar" shown near the top of the screen. The tool bar uses large, recognizable icons.
8. Press the "SORT" button to select an alternate sort sequence for the display (Figure 1a, below). Each list in the SMMS main screen has two or more default sort sequences that you can choose to be the default sort sequence for your display.

You can also click on a column heading to sort the existing list by that column!

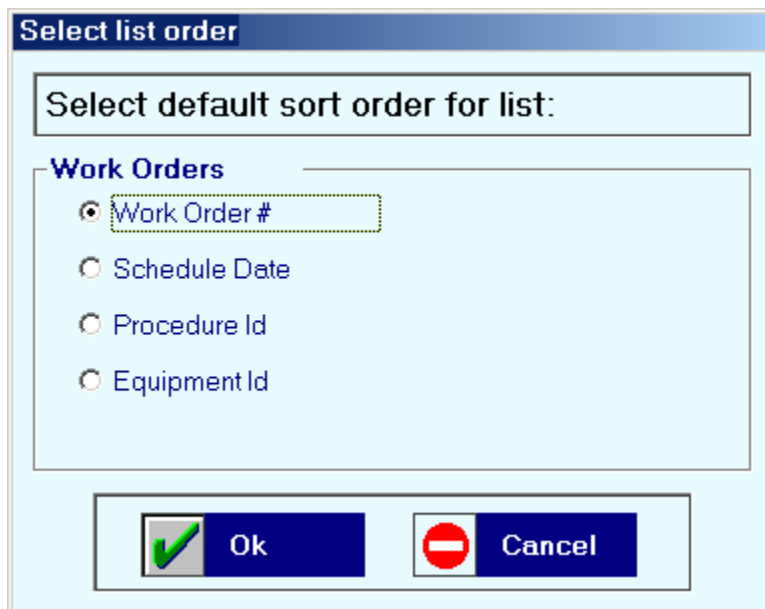


FIGURE 1a

9. The “FILTERS” button allows you to filter out inactive and temporary items from the list. (Figure 1b, below)

**Select List Filters**

Change Filters:

**Procedure**

Omit \*TEMP Procedures?

Omit Inactive Procedures?

Omit \*COMB Procedures?

Ok  Cancel

FIGURE 1b

10. New Company/Division level operations allow unlimited physical locations, with additional management reporting and consolidation features. Click on the Company/Division to select a different division for the display. (Figure 1c) The selection window will only select those companies and divisions where you have a minimum of “Display” data authority.

**Change Company & Division**

Select new Company and Division :

**Current**

Company 1 Division

**Change to**

Company 01 ATL

Ok  Cancel

FIGURE 1c

### Company & Division Processing

Version 6 introduces optional *DIVISIONS* as a sub-level to the *COMPANY* level.

Clients with more than 99 physical plant locations can now establish 5-character DIVISION locations as part of the larger Company entity.

This allows you to establish a virtually unlimited number of plant and warehouse physical locations for each of the 99 companies supported by the system.

Divisions are optional! You can choose not to implement divisions, and continue to operate with only Companies.

If you choose to implement divisions within your SMMS database, each division will have independent security and control specifications. These specifications will override any controls established at the Company level.

The screenshot shows a software window titled "Division Maintenance & Inquiry" with a menu bar (File, Edit, Report, Download, Utility, Help) and a toolbar with icons for Ok, Cancel, Exit, Create, Copy, Delete, Lookup, Next, Reports, Download, and Help. The window is divided into two tabs: "Division" and "Controls", with "Controls" selected. The main area displays the following information for Division "ATL":

- Division: ATL
- Division Name: Atlanta Corrugated Metals
- Address: 807 Havey King Drive
- City / State / Zip: Atlanta GA 30341
- Last WO Date: 10/14/01
- Last Plant Shutdown: 06/06/01
- Contact Name: JERRY HILGENBERG
- Contact Phone: [919] 361-9727
- Labor Cost: Combination box
- Labor Rate: 22.50
- Part Costing Method: Combination box

At the bottom of the window, there is a "Message subfile" area.

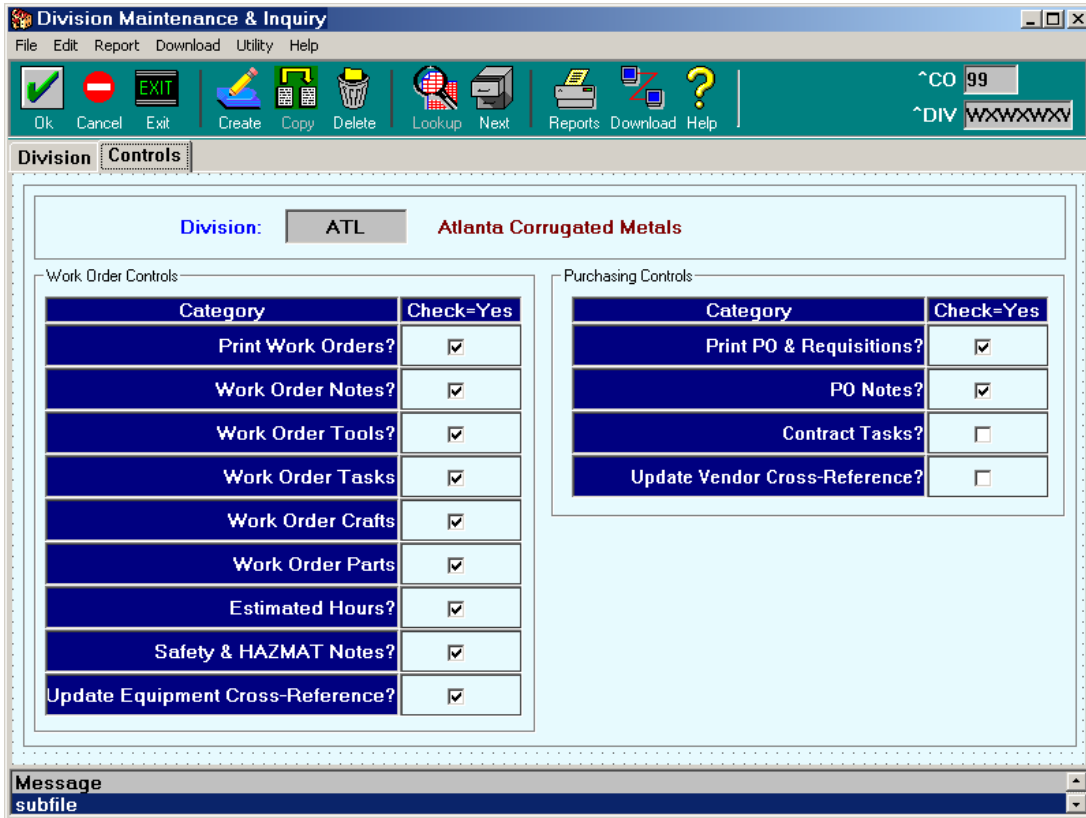
FIGURE 2

For example, in Figure 2 a Division "ATL" has been established within Company 01.

The Division name, address, contact information, labor costing method and rates, and inventory part costing method, may all be selected independently of Company 01 – the Company to which this Division belongs.

By default, when a new division is created it has the same control settings as the parent Company, although these can easily be changed using the Division control screens shown in Figure 2 and Figure 3 (below).

**NOTE: You are not required implement Division level reporting. A Division Id of “blanks” is perfectly valid in the system, in which case the Company-level controls will be utilized as though the Company operates without Divisions.**



**FIGURE 3**

Figure 3 shows the work order & purchase order control parameters for the ATL division. The control parameters for Division ATL override any settings for Company 01 in the Company file.

### **Client/Server Architecture**

SMMS Version 6 employs a “thin client” implementation of client/server technology to ensure data availability that is secure, reliable, and consistent, whether you choose to implement the graphical workstation-based software or the traditional “green screen” terminal operation.

Our innovative “*data queue*” server programs, combined with the advanced database technology of DB2/400, ensure the best possible system response time at your workstation.

The server technology uses the IBM iSeries (AS/400) platform running the OS/400 operating system and DB2 database. Client machines can be connected to the network using Windows NT, 2000, 9x or higher operating systems